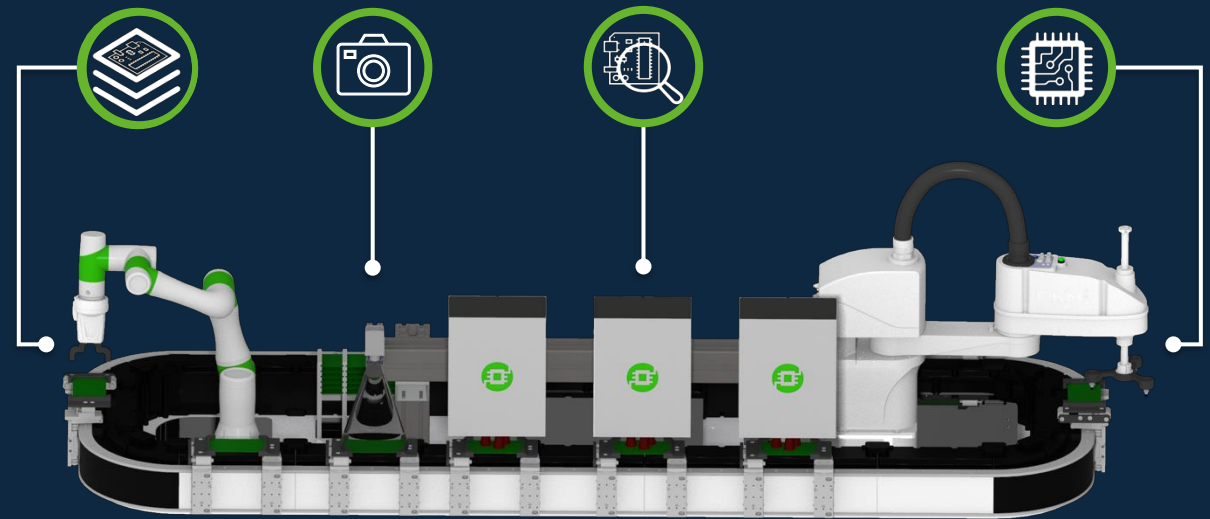


DESOLTIK

Multistage Inspection System

AI-powered PCB diagnostics that enables a profitable circular economy in electronics industry



We are drowning in electronic waste – and losing valuable resources.



62 million tons

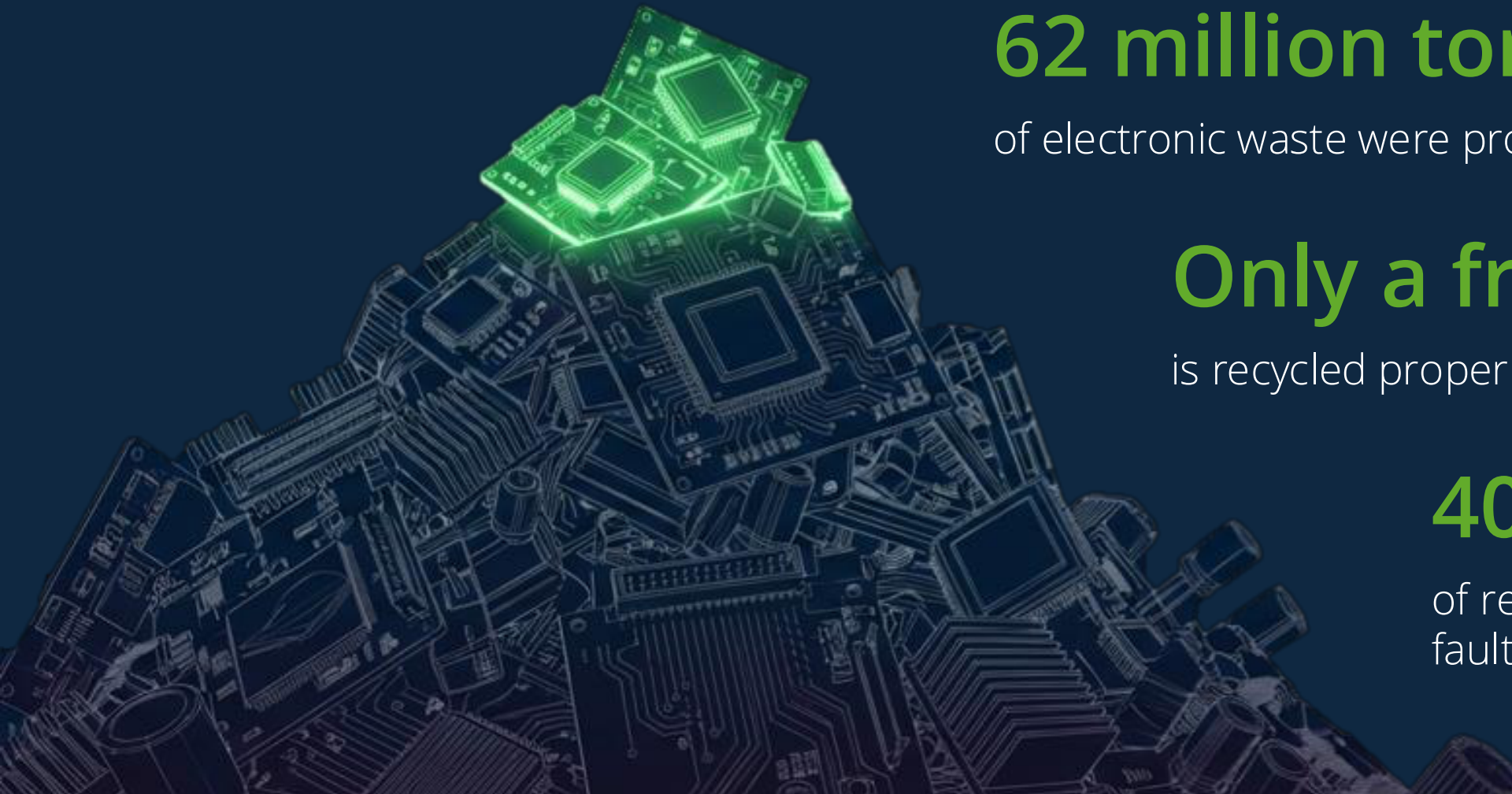
of electronic waste were produced in 2022 [1]

Only a fraction

is recycled properly

40–60%

of repair costs are lost on fault detection alone [2]



[1] Baldé u. a., „THE GLOBAL E-WASTE MONITOR 2024“ | [2] Based on qualitative insights from expert interviews and customer discussions in railway industry

DESOLTIK develops an high-speed inspection platform that makes repair decisions – not just measurements.

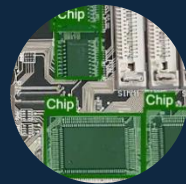
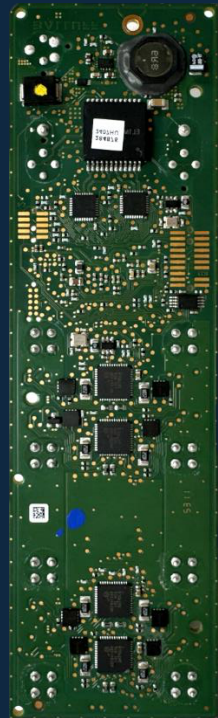


Returned device

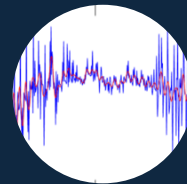
Data generation

Processing

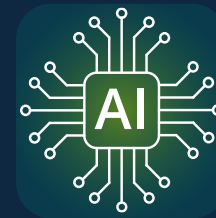
Decision



Optical inspection



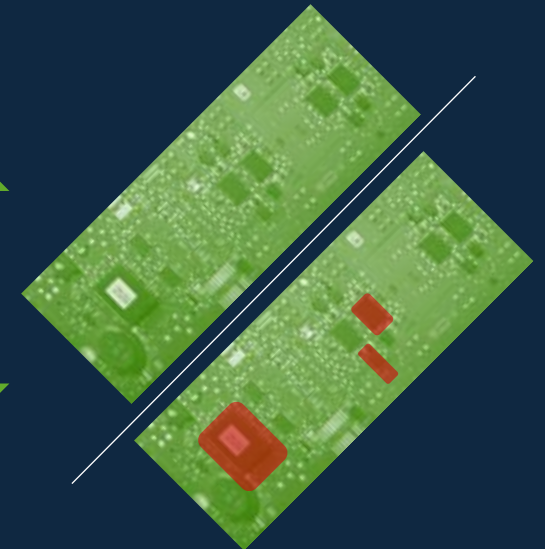
Current-over-Time



ERP



Data



A €485B Market Ready to Be Won

With a doubling of the market by 2030 due to increasing reparability



TAM

€485b

Global spending on repair services for electronics

SAM

€30b

European market for industrial electronics fault diagnosis

SOM

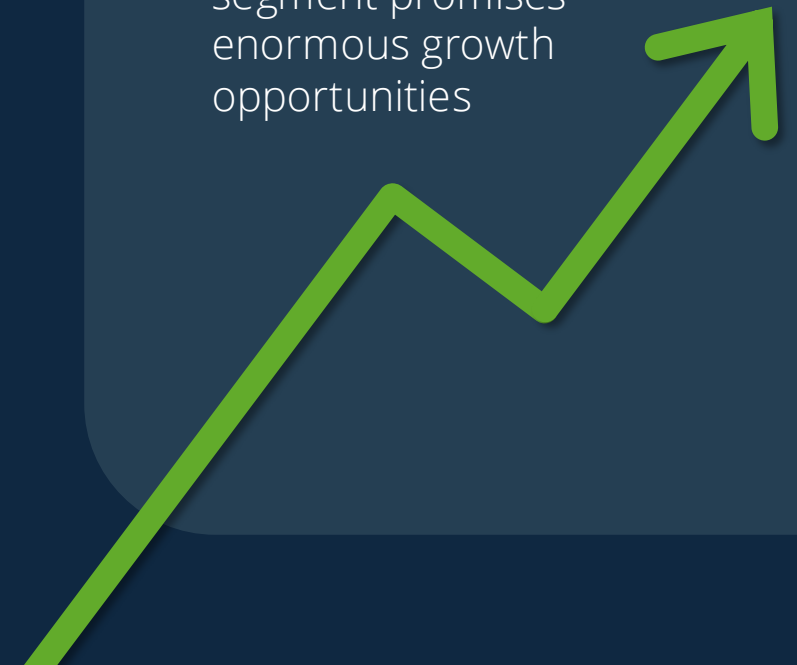
€367m

At 0.05% market share in Germany (5-year forecast)

Outlook

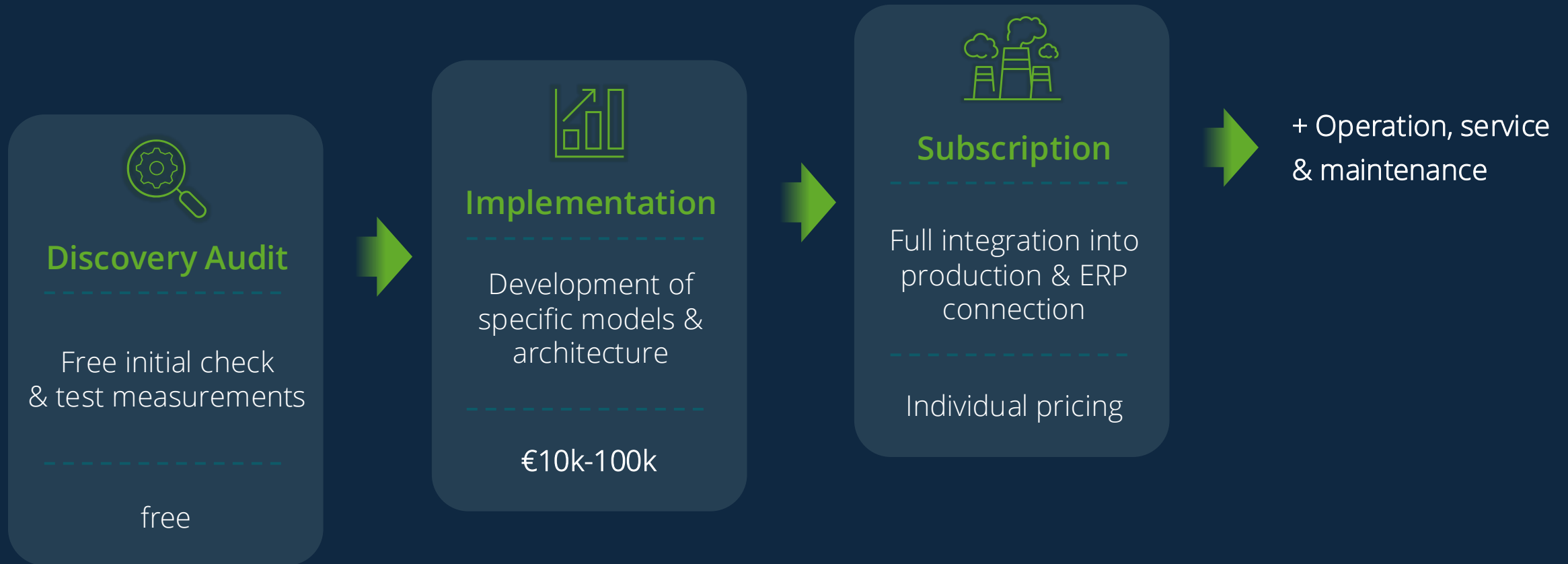
12.1% CAGR^[1]

in the refurbished electronics segment promises enormous growth opportunities



[1] <https://www.transparencymarketresearch.com/refurbished-electronics-market.html>

Scalable B2B SaaS Licensing – from zero-risk discovery to high-margin, multi-stage inspection subscriptions



We focus on mid-to-large industrial OEMs & service providers where every faulty module is worth **€200 – €10.000** — making our licence a no-brainer.

A new category of adaptive diagnostics – where no incumbent competes.



Key Insights



Desoltik enables flexible, data-driven inspection – optimized high mix, low volume



Hybrid competitors combine methods – but lack adaptive test flow or economic logic



Traditional systems rely on fixed test scripts for known defects in high-volume production

Desoltik combines adaptive, multi-method diagnostics with economic intelligence to recommend the most profitable reuse strategy for high mix, low volume industries.

Example usecases for CoT – already proven today



Balluff IO-Link Master

Classification of manipulated assemblies in functional and working devices.



- ➔ Model accuracy > 97%
- ➔ Inspection time < 1 min

Telecommunication Router

Problem: Signal loss visible after 60 min, which blocks test capacities.



- ➔ With CoT: fault prediction in < 5 minutes
- ➔ 5x – 12x time reduction per device

Other areas with great potential

Customer Segments



Automation



Communic.



Railway

Further usecases



Servo Drive System



Industry Router

A Founding Team with Deep Tech & Executive Power



Rouven Jachemich

CEO

Finance, Sales &
Communication

 **M.Sc. Electrical Engineering**
KIT Karlsruhe

 rouven.jachemich@desoltik.com

 [linkedin.com/in/rouven-jachemich](https://www.linkedin.com/in/rouven-jachemich)



Maximilian Möbius

COO

Technology Transfer &
Customer Relations

 **M.Sc. Electrical Engineering**
KIT Karlsruhe

 maximilian.moebius@desoltik.com


 [linkedin.com/in/max-moebius](https://www.linkedin.com/in/max-moebius)



Alexander Meiners

CTO

Product Development &
Implementation

 **M.Sc. Business Informatics**
KIT Karlsruhe

 alexander.meiners@desoltik.com

 [linkedin.com/in/alexander-meiners/](https://www.linkedin.com/in/alexander-meiners/)



**Prof. Dr.-Ing. Florian
Stamer**

Strategic Advisor

 **Prof. for Production Mgmt.**
Leuphana University

 florian.stamer@desoltik.com

 [linkedin.com/in/fstamer](https://www.linkedin.com/in/fstamer)



Let's turn diagnostics into decisions — together.



Contact us:

Rouven Jachemich




CEO

 Rouven.jachemich@desoltik.com

 Karlsruhe, Germany

What We're Looking For

Strategic Circular Pilot Partner

-  Integrate CoT-based pre-disassembly grading
-  Reduce diagnostic time by up to 12x
-  Scale circular electronics processing across sites

 Become our pilot partner for scalable circular electronics diagnostics.

Let's connect!



www.desoltik.com



desoltik

